

PCI-Express to RS-485/422 card 2-Ports Model: UT-792I

I. Summary

UT-792I, convert PCI-E into 2 ports RS-422/RS-485, industrial grade, with built-in Opto-isolator and TVS. Integrated with 600W lightning surge protection for each line; with ESD protection, protect your device against surge voltage and transient over voltage caused by any other factors. It also guarantees the high-speed transmission of RS-422/RS-485 interface.

Highly trust performance and stability with reasonable price.

II. Feature:

Hardware Interface

Connection Type: DR44 female x1;

BUS: X1 2.5Gbps PCI Express

Signal RS-422: T/R+, T/R-, RXD+, RXD-, GND;

Signal RS-485: Data+ (A) Data- (B) GND

Transmission Rate: 300bps-921.6Kbps

Data Bit: 5, 6, 7, 8; Stop Bit: 1, 1.5, 2

Parity Bit: None, Even, odd, Space, Mark

Flow Control: RTS/CTS XON/XOFF

Operating Temperature: -45°C ~80°C

Interface Protection: 600W surge protection per line for RS-485, RS-422 interface, ±15KV ESD protection

Transmission distance: RS-485/422 communication distance reaches up to 1.2Km

Supporting System: Win2000/XP/Vista/Win7/8/10 64bit NT4.0/CE 4.2/5.0/6.0/Vxworks/Linux 2.4.x/2.6.x

The speed of each interface can reach up to 921.6Kbps and supports 256byte FIFO drivers and internal soft and hardware flow control. The universal use PCI is compatible with PCI-E.

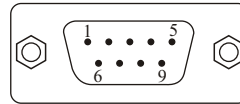
III. Pin assignment:

1、DB9 male side: RS-485/RS-422

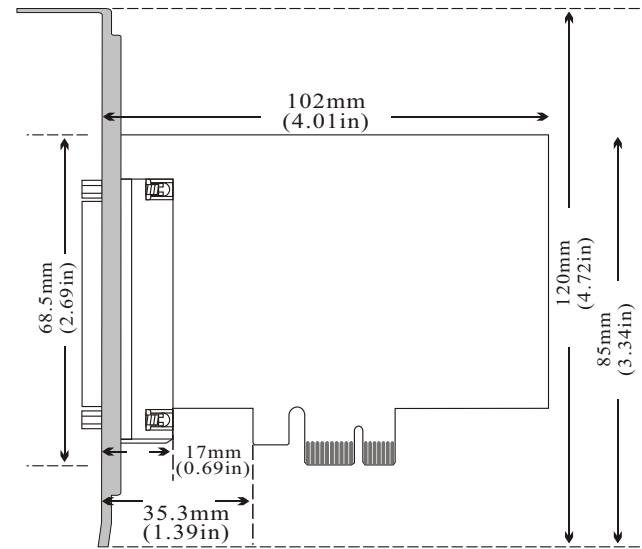
Port1-Port2

Db9 male (PIN)	Signal	RS-422	RS-485
1	T/R+	T/A+	RS-485 (A+)
2	T/R-	T/B-	RS-485 (B-)
3	RXD+	R/A+	N/C
4	RXD-	R/B-	N/C
5	GND	GND	GND
6			
7	N/C		
8	N/C		
9	N/C		

DB9 male

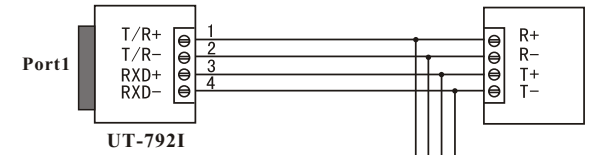


IV. Profile

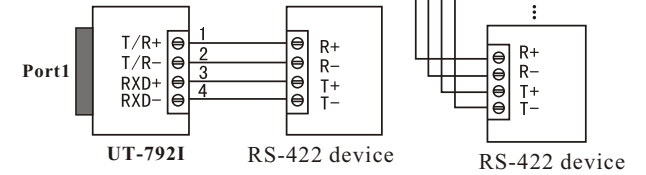


V. Connect Diagram

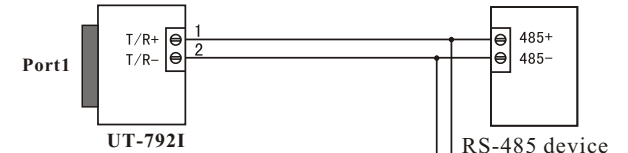
1. RS-485 Point to Multi Point connection



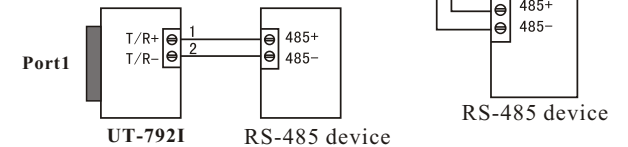
2. RS-422 P2P connection



3. RS-485 Point to Multi Point connection



4. RS-485 P2P connection



VI. Faults and Ruling Out:

1、Data Communication Failure

- A、Check the PCI-E interface
- B、Check if RS-485/RS-422 output interface line is correct
- C、Check if the power supply light is lit
- D、Check if the line terminal is connected properly
- E、Check if the receiving indicator is flashing during reception.
- F、Check if the sending indicator is flashing during sending.

2、Data Loss or Mistake

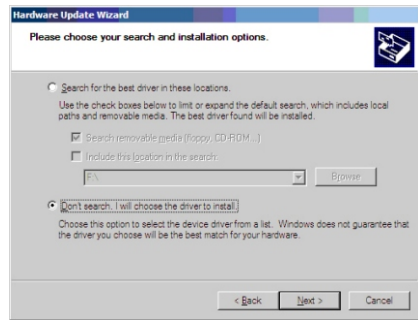
- A、Check if the speed and format of the data communication

VII、Driver Installation Procedure

When plug in UT-792I, system pops up a window, select “Install from list or designated location” and click “Next” .



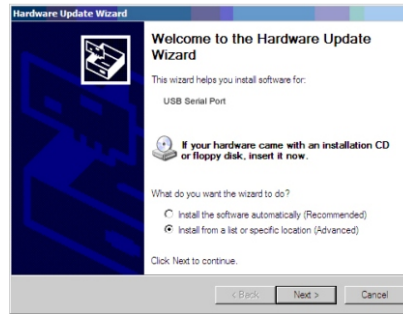
A program path selection installation window will pop up as illustrated below. Select “Search in these locations for the best matching driver”, then “Search include this location”, click “browse” and select the folder in the disc. If your operation system is XP, the select Win2KXP folder. If other systems, select the corresponding folder and click “Next” .



After located and installed the driver, click “Finish” .



New hardware wizard dialog box will pop up again, and drivers for the 3 serial ports need to be installed. Select “installation from the list or designated location” and click “Next” .



Install drivers for the remaining ports following the procedures above.

After drivers are installed, open device manager and check if there is any virtual COM port under port tag. If there is not other port driver installed in the system before, the default COM ports are COM3, 4, as illustrated below. All drivers have now been installed on UT-792I.

